

jeremycole

COLLECTIONS



The iconic Aloe Blossom

Jeremy Cole is an award-winning artisan who has been surrounded by design since childhood. His early memories include watching his mother work in her interior design showroom in New Zealand, where his interest in design began. He worked in the family business before traveling to the UK in 1999.

In 2004, a visit to Tate Modern in London changed his life. There, he was inspired by the beauty of an almost translucent ceramic vessel, and this experience motivated him to explore the relationship between ceramics and light. The very next day, he began working with Bone China, and two months later, he created his first piece, the now-iconic Aloe Blossom, which led to an invitation to exhibit in Frankfurt.

Jeremy Cole is largely self-taught and has attracted attention from design companies like Royal Copenhagen and Swarovski, but he has chosen to follow his own path as an artisan.





Aloe Bud

His artistic philosophy is based on three core pillars: beauty, elegance, and craftsmanship. In 2005, he opened his first ceramic studio in London, where he could ensure full control over the quality and production by handcrafting each piece. His creative successes were recognized internationally, and he became known for his remarkable ability to blend traditional craftsmanship with modern design. Today, his flora-inspired collections are appreciated worldwide. They are admired for both their contemporary style and timeless beauty, as well as for their unparalleled craftsmanship and artistic quality. All pieces are handmade and signed by Jeremy Cole himself.

His work has been recognized in the UK, where the London Chamber of Commerce has called him one of the country's leading artisans. His pieces have been exhibited in museums, and he has undertaken commissioned work for prestigious interior design and architectural projects internationally. Fashion brands such as Bulgari, Harry Winston, and renowned architects and interior designers like Peter Marino and Kelly Hoppen have sought his unique lighting forms. Since 2018, his works have also been part of the fine dining experience aboard Celebrity Edge's Michelin-starred restaurants.



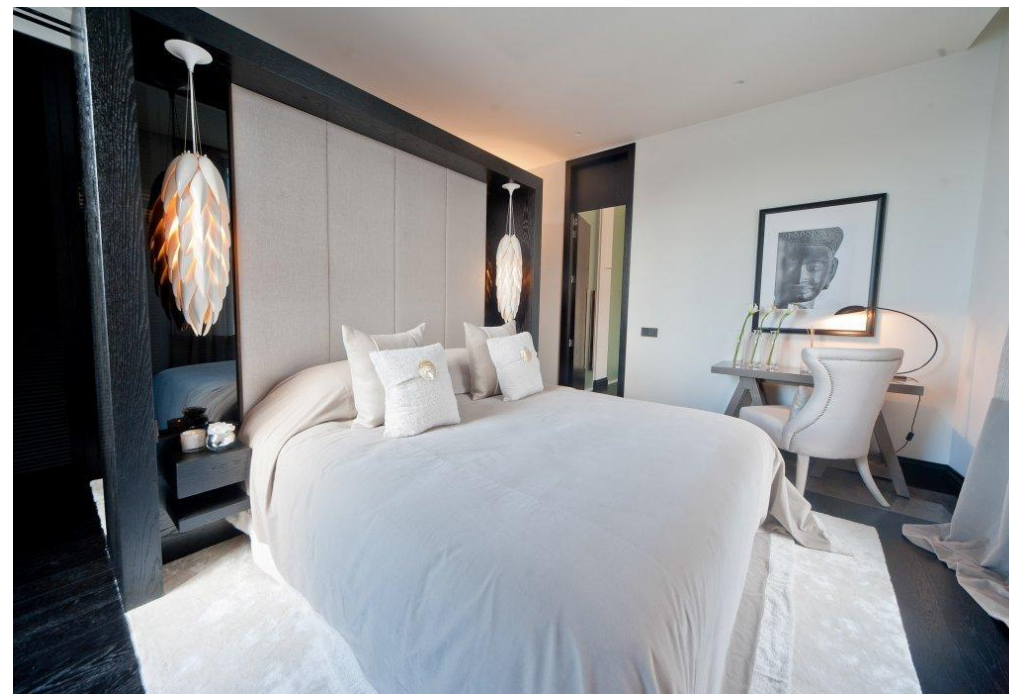


Aloe Shoot

Jeremy Cole's artistic style is deeply inspired by the unique and beautiful flora of his homeland, New Zealand. His ceramics capture light in a magical way, and his works radiate a lasting commitment to superb craftsmanship, elegance, and beauty.

Most recently, he has added Camellia to his collection, a stunning flower originally designed to adorn a Coco Chanel bar at the Ritz in Paris. It has now become a part of his life's work and is available in very limited numbers. Camellia is set to become a new signature piece for the Jeremy Cole collection, reflecting the beauty, elegance, and craftsmanship for which he has become renowned.







Chrysalis

